

Synchron-Standard types 6-pole

10/04/2026

Power

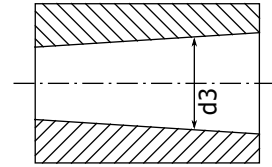
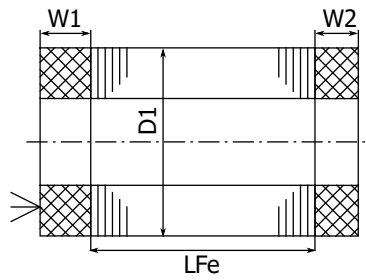
Continuous power for efficient water cooling

Speed	in krpm	1	2	4	6	8	10	12	14	16	18	20	22	24	26	28
Frequency	in Hz	50	100	200	300	400	500	600	700	800	900	1000	1100	1200	1300	1400
Types (D1/LFe in cm)		Power in kW														
mSpW 8.5/6-6-s2r..		0.84	1.7	3.4	5	6.7	8.4	9	9.5	10.1	10.7	11.2	11.8	12.4	13	13.5
mSpW 8.5/8-6-s2r..		1.2	2.3	4.6	6.9	9.2	11.5	12.2	13	13.7	14.4	15.2	15.9	16.6	17.3	18.1
mSpW 8.5/11-6-s2r..		1.6	3.2	6.4	9.6	12.8	16	17.2	18.5	19.7	21	22	23	25	26	27
mSpW 8.5/15-6-s2r..		2.2	4.4	8.8	13.2	17.6	22	24	25	27	28	30	31	33	35	36
mSpW 10.6/6-6-s2r..		1.6	3.1	6.3	9.4	12.5	14.6	15.8	16.8	18	19	20	21	22	23	
mSpW 10.6/8-6-s2r..		2.1	4.2	8.4	12.5	16.7	19.6	21	23	25	26	28	30	31	33	
mSpW 10.6/11-6-s2r..		3	6.1	12.1	18.2	24	28	31	33	35	37	39	41	43	46	
mSpW 10.6/15-6-s2r..		4.2	8.4	16.8	25	34	39	42	45	48	51	54	57	60	63	
mSpW 10.6/17-6-s2r..		4.7	9.4	18.8	28	38	44	48	51	54	58	61	65	68	72	
mSpW 12/6-6-s2r..		2.1	4.2	8.4	12.6	16.8	18.3	19.8	21	23	24	26	27	29		
mSpW 12/8-6-s2r..		2.8	5.6	11.3	17	23	25	27	29	31	34	36	38	40		
mSpW 12/10-6-s2r..		3.6	7.1	14.2	21	28	31	34	37	39	42	45	48	50		
mSpW 12/11-6-s2r..		4	8	15.9	24	32	35	38	41	44	46	49	52	55		
mSpW 12/15-6-s2r..		5.6	11.1	22	33	44	48	52	56	60	64	68	72	75		
mSpW 13.5/8-6-s2r..		3.7	7.3	14.7	22	27	30	33	36	38	41	44				
mSpW 13.5/11-6-s2r..		5.2	10.5	21	31	39	42	46	50	53	57	61				
mSpW 13.5/13-6-s2r..		6.3	12.6	25	38	46	50	54	59	63	67	71				
mSpW 13.5/15-6-s2r..		7.3	14.7	29	44	54	59	64	69	74	79	84				
mSpW 13.5/20-6-s2r..		10	20	40	60	73	79	86	92	98	105	111				
mSpW 15/8-6-s2r..		4.7	9.4	18.9	28	33	37	41	45	49	54					
mSpW 15/11-6-s2r..		6.6	13.2	26	40	45	51	57	63	69	75					
mSpW 15/15-6-s2r..		9.2	18.4	37	55	63	71	78	86	94	101					
mSpW 15/18-6-s2r..		11.3	23	45	68	77	86	95	104	113	122					
mSpW 15/20-6-s2r..		12.6	25	50	75	86	96	107	117	127	138					
mSpW 15/22-6-s2r..		13.8	28	55	83	94	106	117	128	140	151					
mSpW 15/30-6-s2r..		18.8	38	75	113	129	144	160	176	191	207					
mSpW 17/8-6-s2r..		6.3	12.6	25	34	40	45	50	56	61						
mSpW 17/11-6-s2r..		8.6	17.2	34	47	55	63	71	79	88						
mSpW 17/15-6-s2r..		12	24	48	68	83	98									
mSpW 17/20-6-s2r..		15.6	31	62	92	120										
mSpW 17/25-6-s2r..		19.6	39	78	116											
mSpW 24/5-6-s2r..		8.4	16.7	27	31	36	42	48								
mSpW 24/11-6-s2r..		18.3	37	59	68	79	93	107								
mSpW 24/13-6-s2r..		22	44	70	81	95	113	131								
mSpW 24/15-6-s2r..		25	50	81	93	109	130	151								
mSpW 24/20-6-s2r..		35	69	111	125	146	173	201								
mSpW 24/25-6-s2r..		44	87	140	156	182	217	251								
mSpW 24/30-6-s2r..		52	105	167	188	219	260	302								



Dimension sheet

Sketch



Main dimensions all dimensions in mm	Stator			Rotor	
	Outer diameter D1	Length of winding head		Bore d3	max. speed
Typ		W1	W2		
D1/LFe in cm		with PTC		at nominal point	in krpm
mSpW 8.5/ .. -6-s2r..	85.4	28	21	47	31
mSpW 10.6/ .. -6-s2r..	106.5	37	26	60	28
mSpW 12/ .. -6-s2r..	120	35	26	68	24
mSpW 13.5/ .. -6-s2r..	135	35	28	78	20
mSpW 15/ .. -6-s2r..	150	39	33	84	20
mSpW 17/ .. -6-s2r..	170	42	35	105	17
mSpW 24/ .. -6-s2r..	240	59	47	142	12